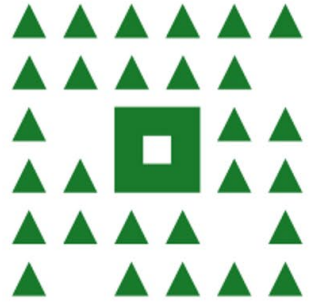
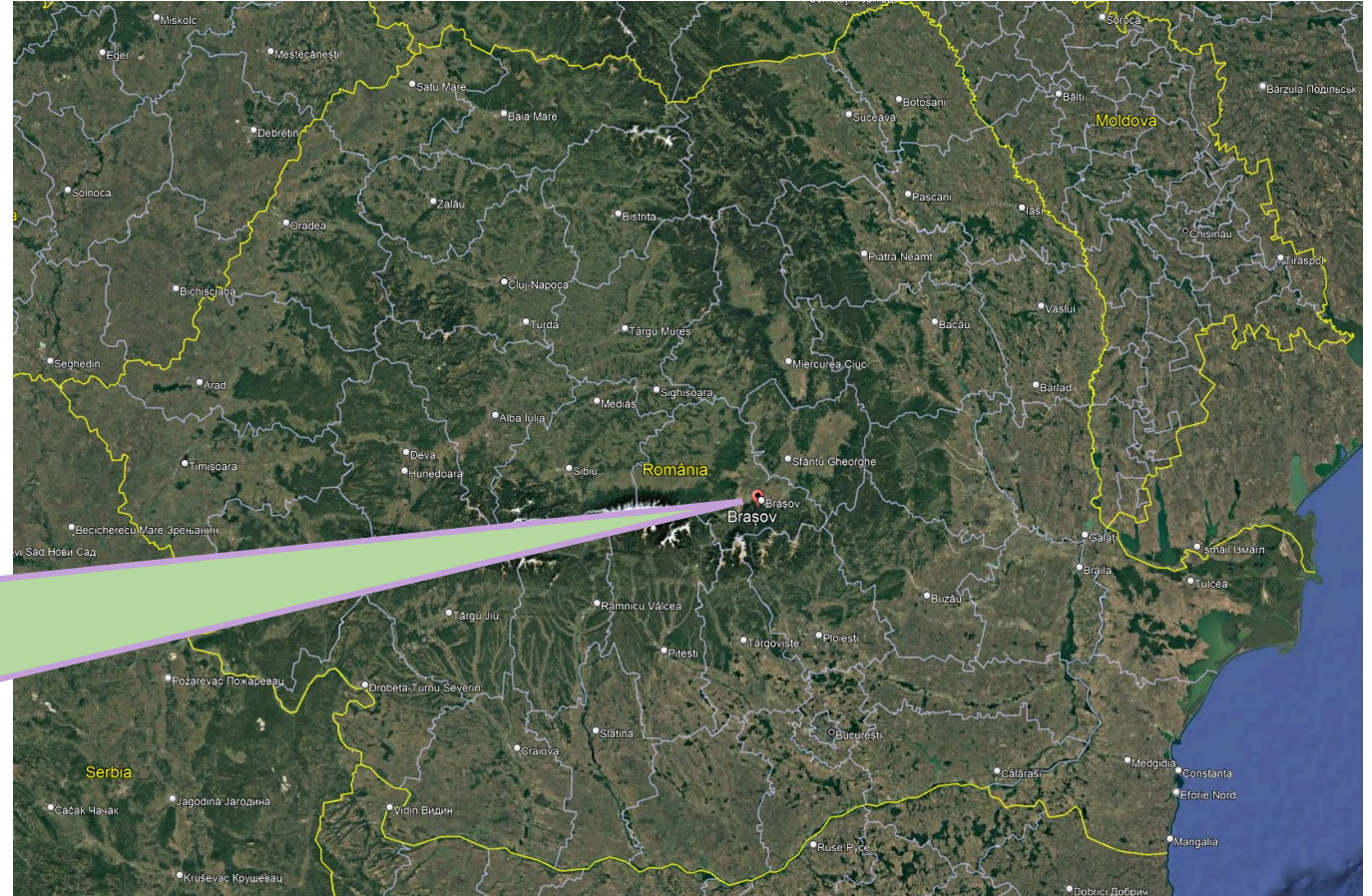




TRANSILVANIA UNIVERSITY OF BRAȘOV FACULTY OF SILVICULTURE AND FOREST ENGINEERING



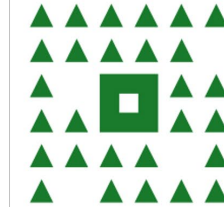
THE CITY OF BRAȘOV



Conveniently located in the heart of Romania, in a mountainous region surrounded by beautiful forests (incl. some of the last virgin forests in Europe)



TRANSILVANIA UNIVERSITY OF BRAȘOV
FACULTY OF SILVICULTURE AND FOREST ENGINEERING



THE CITY OF BRAȘOV



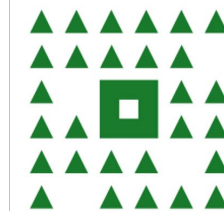
Home to the largest sky resort in the country



The main tourist attraction in Romania during the last few decades (1.5 million tourists in 2024)



TRANSILVANIA UNIVERSITY OF BRAȘOV
FACULTY OF SILVICULTURE AND FOREST ENGINEERING

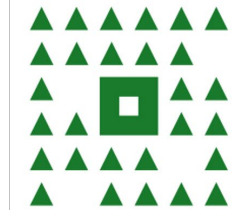


TRANSILVANIA UNIVERSITY

- Founded in 1948, with the creation of the Forestry Institute in Braşov
- Currently one of the largest universities in Romania:
 - Faculties: 18
 - No. of students: over 20,000
 - Teaching staff: over 700



TRANSILVANIA UNIVERSITY OF BRAŞOV
FACULTY OF SILVICULTURE AND FOREST ENGINEERING



TRANSILVANIA UNIVERSITY

LIBRARY



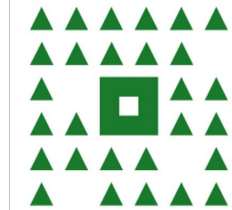
**CONFERENCE
HALL**



**HIGH-TECH
RESEARCH
INSTITUTE**



TRANSILVANIA UNIVERSITY OF BRAŞOV
FACULTY OF SILVICULTURE AND FOREST ENGINEERING

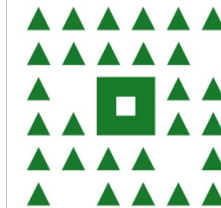


Faculty of Silviculture and Forest Engineering

- Founded in 1948 as the „Forestry Institute of Romania”
- The oldest and most important Forestry School in the country



TRANSILVANIA UNIVERSITY OF BRAȘOV
FACULTY OF SILVICULTURE AND FOREST ENGINEERING



Our educational offer

4 Bachelor programmes (4-year):

- Silviculture
- Forest Engineering
- Wildlife Management
- Geodetic Engineering

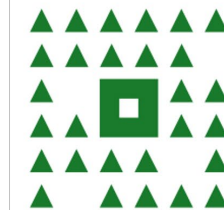
4 Master programmes (2-year):

- Management of Forest Ecosystems
- Management and Technical Systems in Forest engineering
- European Forestry (joint programme)
- Multiple Purpose Forestry - English (**great for Erasmus+ students!**)

Doctoral school in Forestry (4-year) -
also great for Erasmus+ exchanges!



TRANSILVANIA UNIVERSITY OF BRAŞOV
FACULTY OF SILVICULTURE AND FOREST ENGINEERING



Facilities

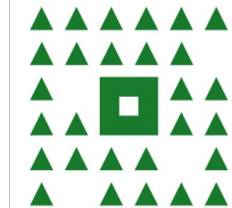
- Laboratories with high-tech equipment and sensors
- Taxidermy collection with rare and unique specimens
- A library with the largest collection of forestry documents in Romania



with 700 wood samples



TRANSILVANIA UNIVERSITY OF BRAŞOV
FACULTY OF SILVICULTURE AND FOREST ENGINEERING



Educational and research base near Braşov (Gîrcini)



Ichthyology lab



Rods for competitive fishing



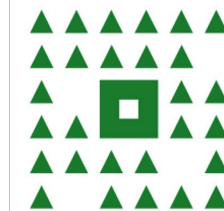
Wildlife management lab



A 20,000 sq.
meters fish
nursery



TRANSILVANIA UNIVERSITY OF BRAŞOV
FACULTY OF SILVICULTURE AND FOREST ENGINEERING



Educational and research base near Braşov (Sânpetru)



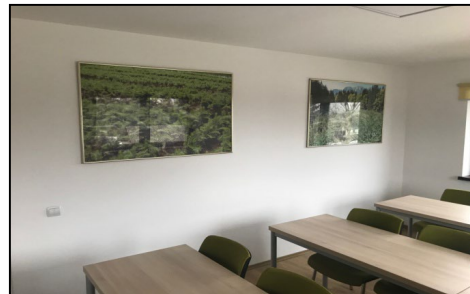
Tree nursery with
meteorological station



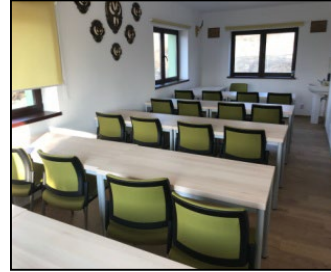
Virtual shooting range



Open shooting range for
non-lethal weaponry



Tennis courts

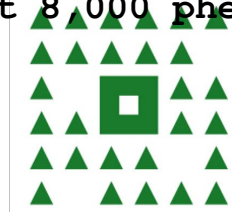


Pheasantry with incubator, two aviaries,
poultry houses

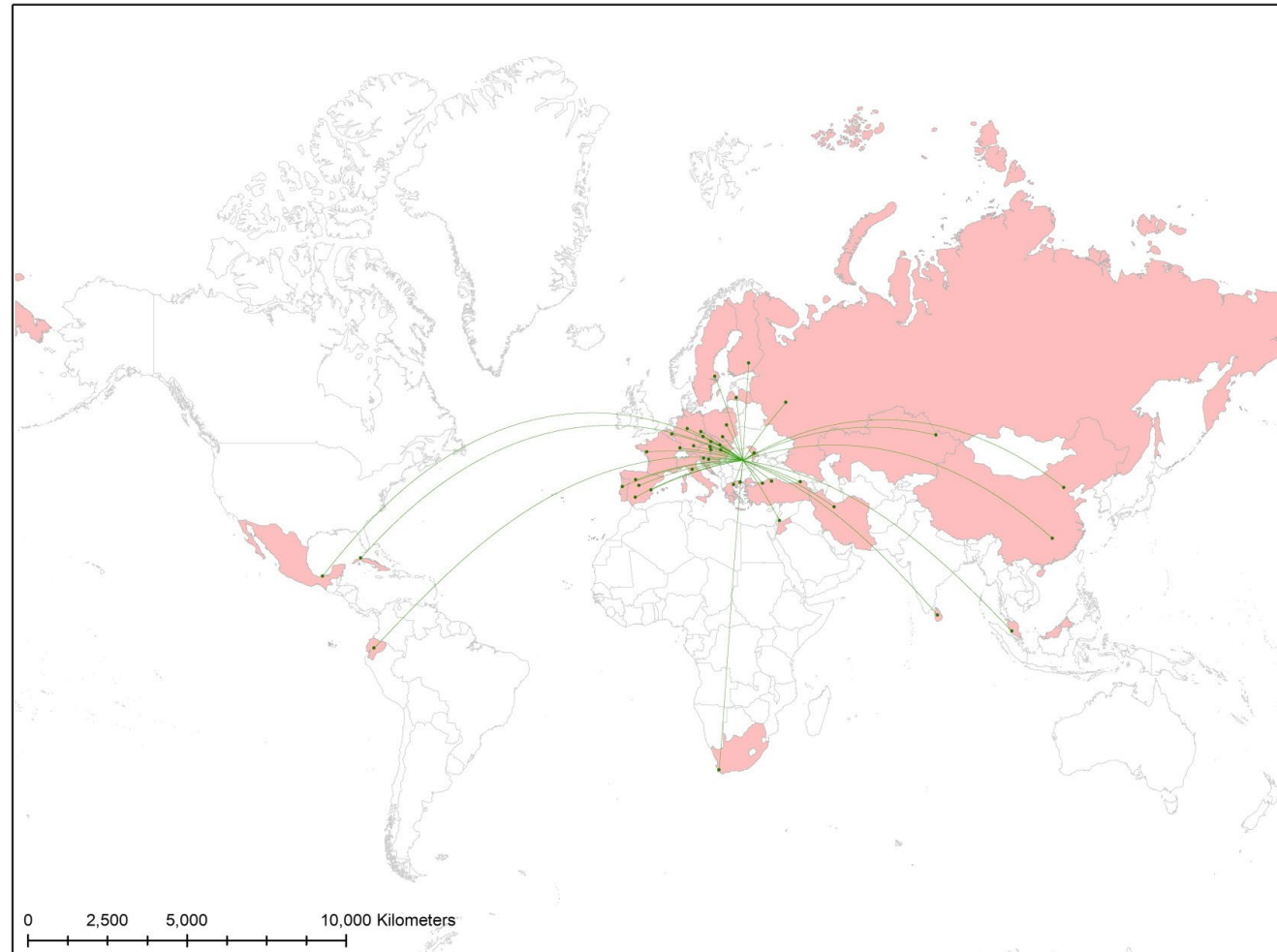
(about 8,000 pheasants)



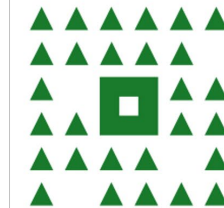
TRANSILVANIA UNIVERSITY OF BRAŞOV
FACULTY OF SILVICULTURE AND FOREST ENGINEERING



International cooperation



TRANSILVANIA UNIVERSITY OF BRAŞOV
FACULTY OF SILVICULTURE AND FOREST ENGINEERING



Research projects & avenues

Topics: Crop tree silviculture in sessile oak-, pedunculate oak-, European beech-, silver fir-, Norway spruce-dominated stands.

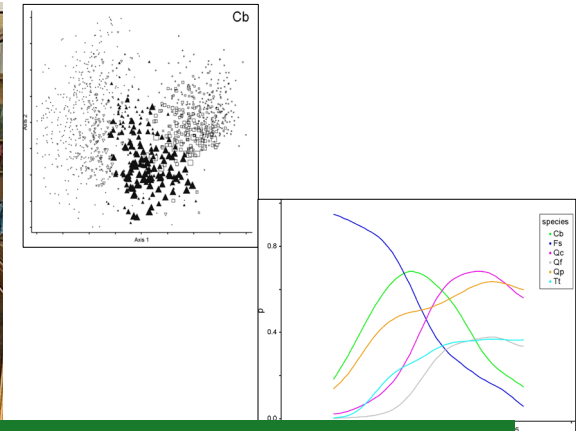


Prof. Valeriu-Norocel
Nicolescu

Topics: Vegetation science, Botany, Biodiversity Conservation

Research interests:

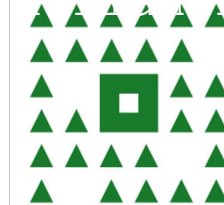
- The impact of forest management on plant species & vegetation diversity
- Mapping woodland habitats
- Assessing the conservation status of rare plant species



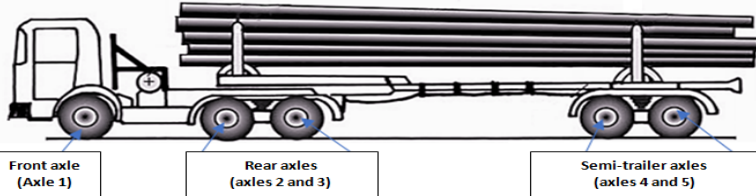
Prof. Adrian
Indreica



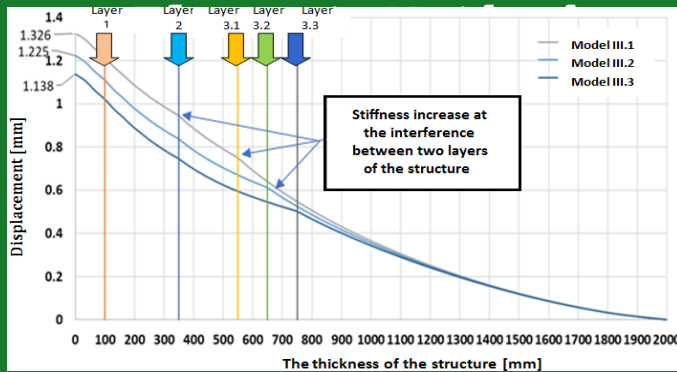
TRANSILVANIA UNIVERSITY OF BRAŞOV
FACULTY OF SILVICULTURE AND FOREST ENGINEERING



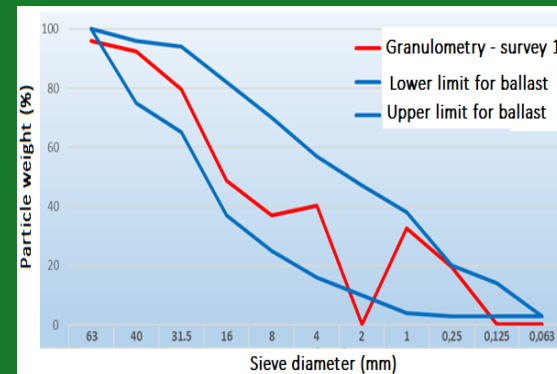
Research projects & avenues



forest road systems
subjected to
different loadings
by using the Finite



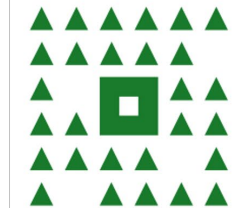
Time behaviour of
forest roads



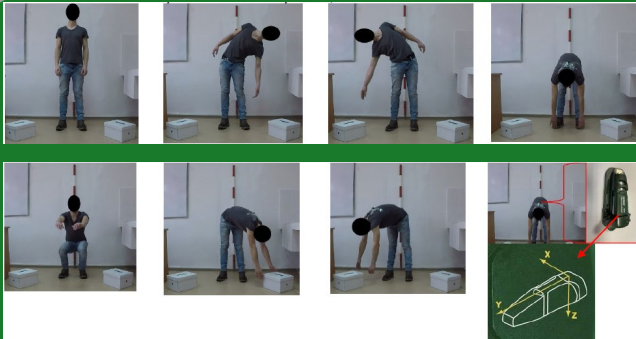
Assoc. prof.
Elena Muşat



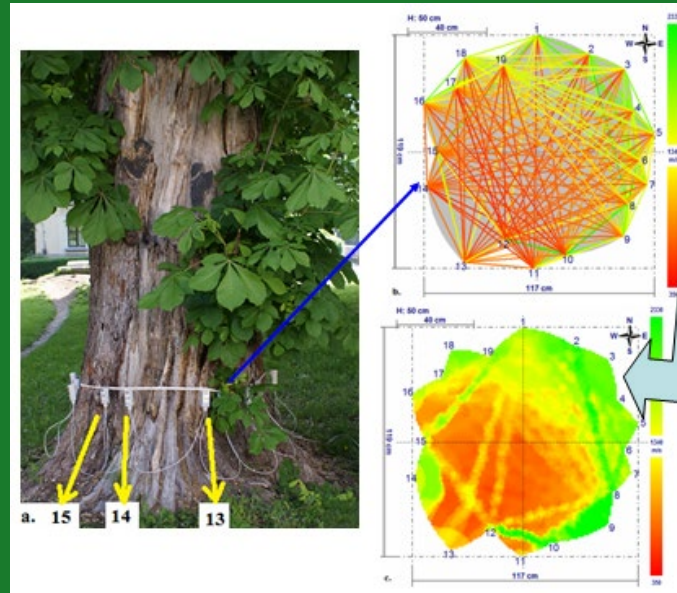
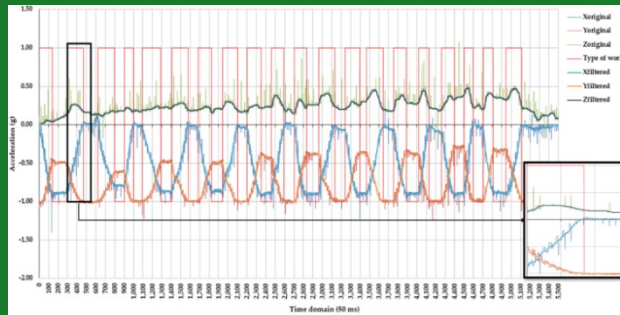
TRANSILVANIA UNIVERSITY OF BRAŞOV
FACULTY OF SILVICULTURE AND FOREST ENGINEERING



Research projects & avenues



acceleration data to
differentiate the
posture, dynamic and
static work of the



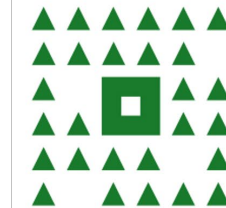
identification of
internal defects by
analysis of sound
transfer through
wood



Assoc. prof.
Elena Mușat



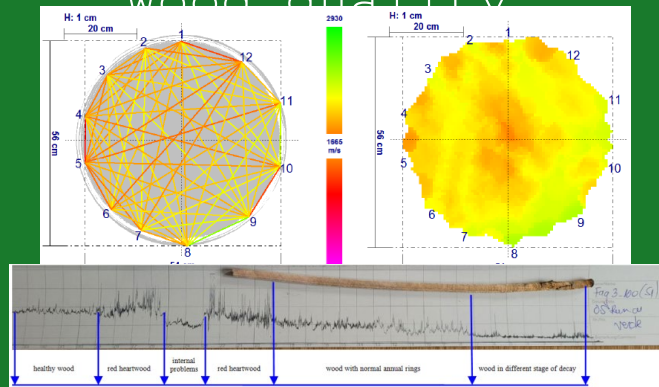
TRANSILVANIA UNIVERSITY OF BRAȘOV
FACULTY OF SILVICULTURE AND FOREST ENGINEERING



Research projects & avenues



Impact of forest fires on trees and wood quality



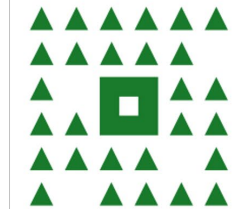
Dimensional characteristics of wood chips and their moisture content for short-rotation crops of energy willow



Assoc. prof.
Elena Muşat



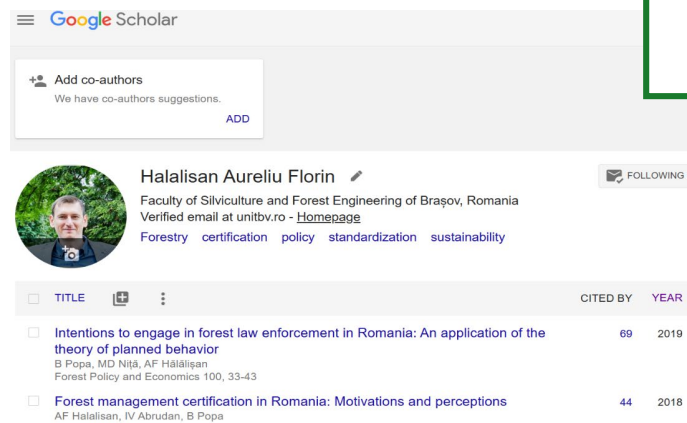
TRANSILVANIA UNIVERSITY OF BRAŞOV
FACULTY OF SILVICULTURE AND FOREST ENGINEERING



Research projects & avenues

Romanian local expert on forest certification (FSC/PEFC) and forest policy.

Local expert for ASI (Accreditation Service International) for FM and CoC FSC assessments in Romania.



Assoc. Florin
Hălălişan



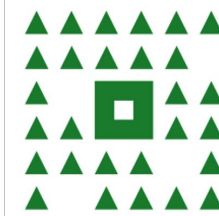
TRANSILVANIA UNIVERSITY OF BRAŞOV
FACULTY OF SILVICULTURE AND FOREST ENGINEERING

Contract with FSC International: Review and revision of FSC Centralised and National Risk assessment for Romania (lot 14)

- Report of existing risk assessment against the requirements of the revised FSC-PRO-60-006b Risk Assessment Framework
- Performing independent research on risks related to the assigned indicators in the agreed areas.
- Preparing the first draft of revised risk assessment, including the analysis of risks per each indicator and mitigation measures using the risk assessment template



<https://connect.fsc.org/contribute-standards/fsc-country-requirements-schedule>



Research projects & avenues

Modernising master programs to support forest sector transformation towards Ukraine's post-war green rebuilding"

(ForestPost) content of forest-based master study program in accordance with the labor market demand, and global and national challenges.

- Strengthen the application of dual education approach in forest-based education.
- Develop green skills of students through implementation of new study courses.
- Develop the links between Ukrainian forestry institutions, EU institutions and industry.
- Popularize forestry education and disseminate knowledge on forestry's contribution to the EU

Assoc. Aureliu
Green Deal in Ukraine.
Hălălișan

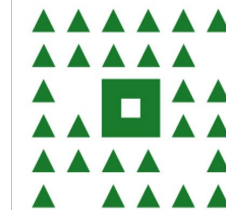


Universitatea
Transilvania
din Braşov

Erasmus+ CBHE



TRANSILVANIA UNIVERSITY OF BRAŞOV
FACULTY OF SILVICULTURE AND FOREST ENGINEERING



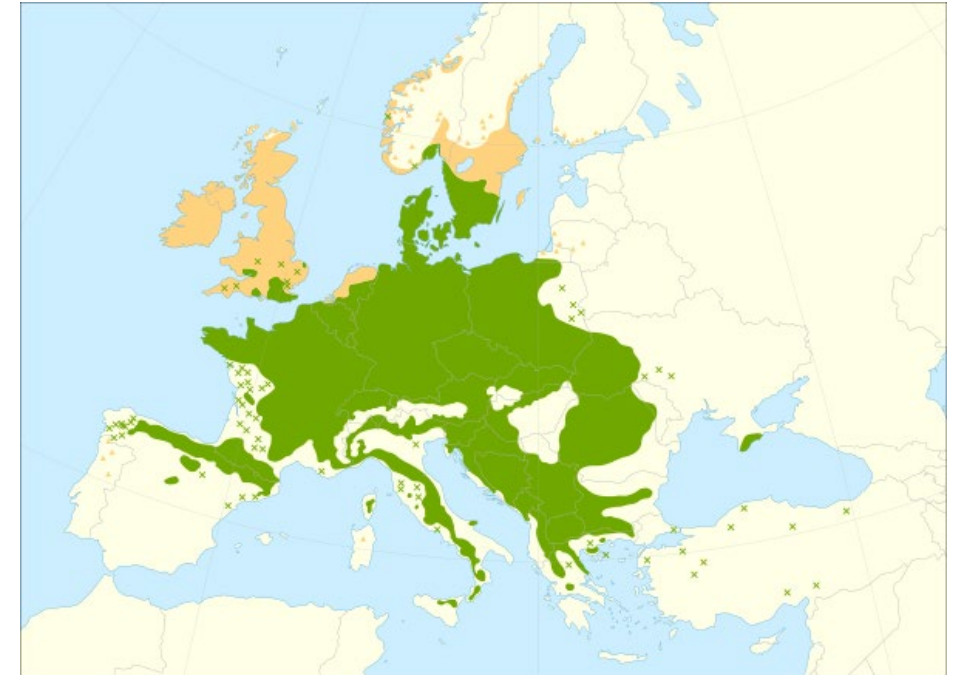
Research projects & avenues

UNESCO WORLD HERITAGE SITE PROJECT:
ANCIENT AND PRIMEVAL BEECH FORESTS
OF THE CARPATHIANS AND OTHER REGIONS
OF EUROPE

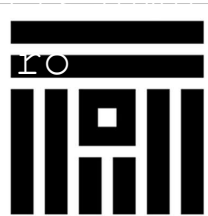
**Collaboration with The Ministry
of the Environment of the
Slovak Republic (Slovakia)**

Public survey at European level on the
general public awareness on the UNESCO
World Heritage Site project - Ancient and
Primeval Beech Forests of the Carpathians
and Other Regions of Europe

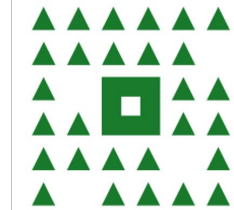
Position held: representative for Romania



Assoc. Aureliu
Hălălișan



TRANSILVANIA UNIVERSITY OF BRAȘOV
FACULTY OF SILVICULTURE AND FOREST ENGINEERING



Research projects & avenues

Topics:

- Deep/machine learning approaches to model AGBD, carbon stock etc. using GEDI satellite LiDAR data
- Close-range photogrammetry for monitoring the state of road surfaces
- Airborne, Terrestrial and Mobile LiDAR for the characterisation of forest ecosystems
- Usage and limitations of GNSS in forested areas

Accuracy of Ground Surface Interpolation from Airborne Laser Scanning (ALS) Data in Dense Forest Cover

by Mihnea Căţeanu *  and Arcadie Ciubotaru 

Department of Forest Engineering, Faculty of Silviculture and Forest Engineering, Transilvania University, 500123 Brasov, Romania

* Author to whom correspondence should be addressed.

The potential of close-range photogrammetry in evaluating the severity of road surface deformations


Mihnea Căţeanu and Sorina Mihaela Miclescu

Keywords: close-range photogrammetry, Structure-from-Motion, road surface deformations, 3D surface reconstruction, LiDAR



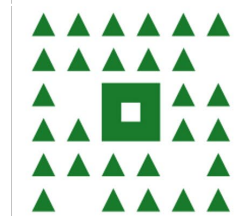
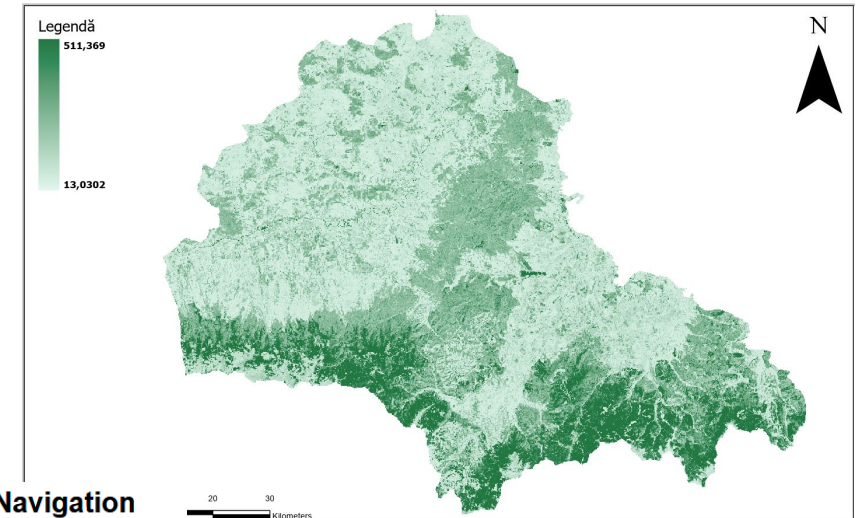
TRANSILVANIA UNIVERSITY OF BRAŞOV
FACULTY OF SILVICULTURE AND FOREST ENGINEERING

Performance Evaluation of Real-Time Kinematic Global Navigation Satellite System with Survey-Grade Receivers and Short Observation Times in Forested Areas

by Mihnea Căţeanu *  and Maria Alexandra Moroianu



Lect. Mihnea
Căţeanu

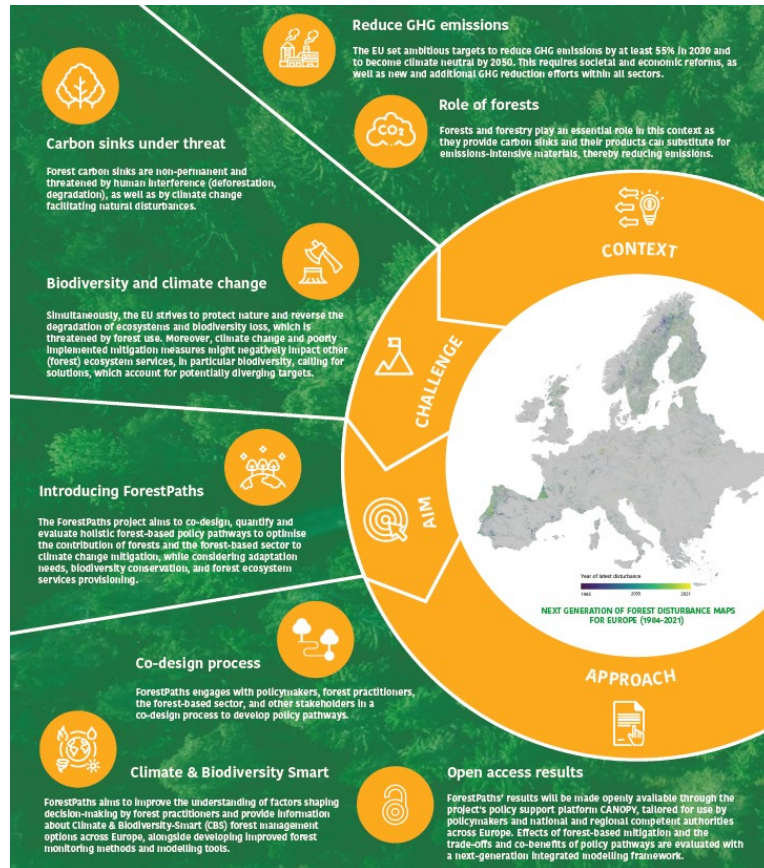


Research projects & avenues



CO-DESIGNING HOLISTIC FOREST-BASED POLICY PATHWAYS FOR CLIMATE CHANGE MITIGATION

forestpaths.eu
@forestpaths_eu
in ForestPaths Project



Pan-European forest disturbance maps



D2.1

Next generation European forest disturbance map

Pan-European forest composition and structure maps



D2.2

European forest composition and structure maps
Available in August 2024

High conservation value forests in Europe



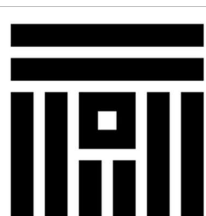
D2.4

High conservation value forests in Europe
Available in February 2025

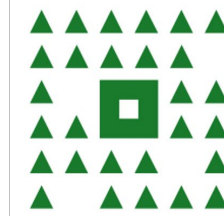


SCAN ME


Prof. Mihai
Daniel



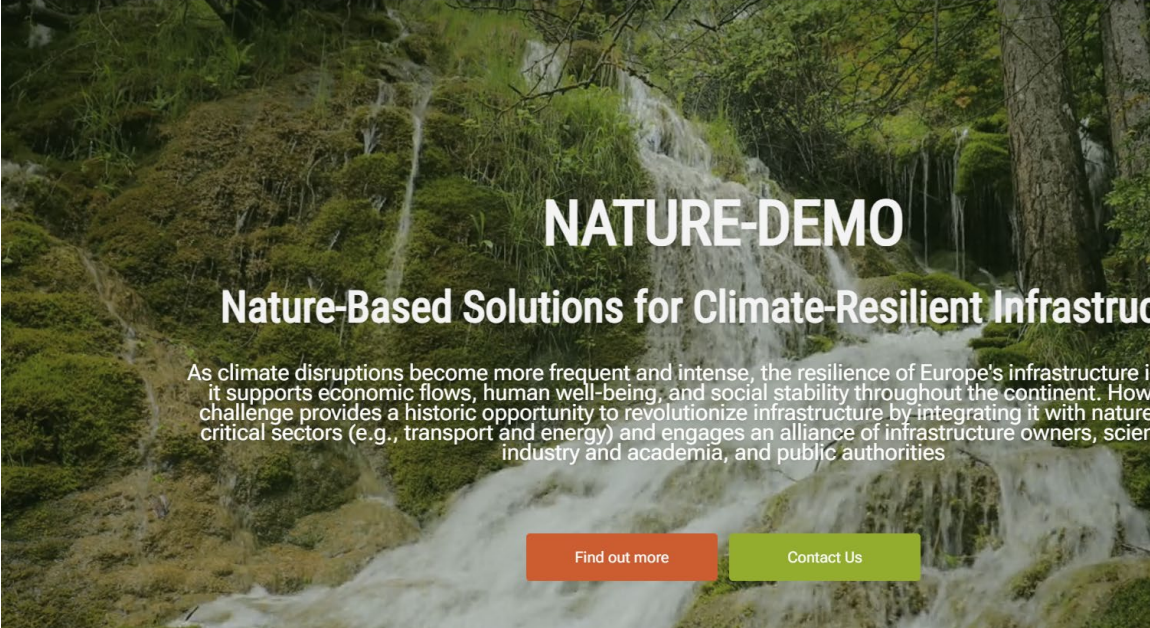
TRANSILVANIA UNIVERSITY OF BRAŞOV
FACULTY OF SILVICULTURE AND FOREST ENGINEERING



Research projects & avenues



Home The Project Work Packages Demonstrators Resources F

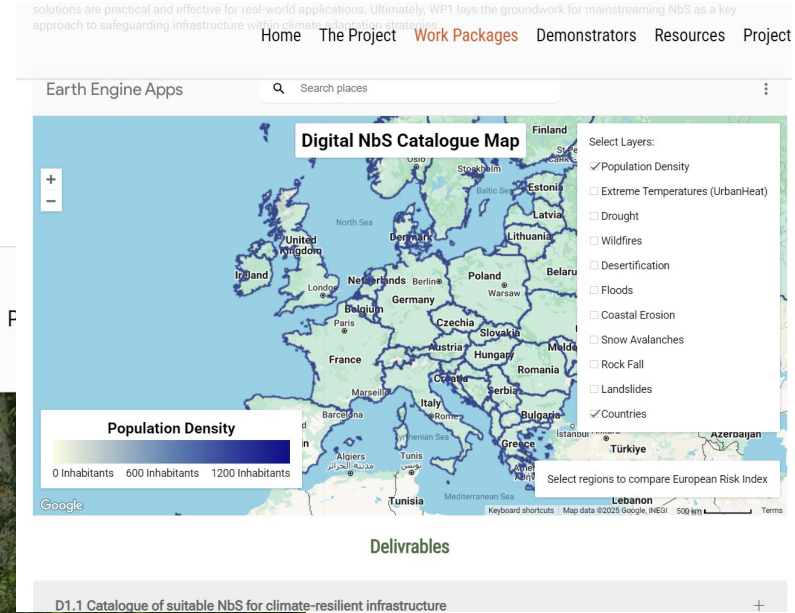


NATURE-DEMO

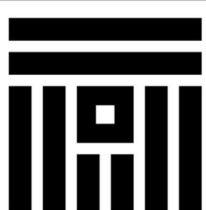
Nature-Based Solutions for Climate-Resilient Infrastructure

As climate disruptions become more frequent and intense, the resilience of Europe's infrastructure is crucial as it supports economic flows, human well-being, and social stability throughout the continent. However, this challenge provides a historic opportunity to revolutionize infrastructure by integrating it with nature. It covers critical sectors (e.g., transport and energy) and engages an alliance of infrastructure owners, scientists from industry and academia, and public authorities

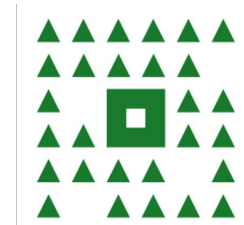
[Find out more](#) [Contact Us](#)



Prof. Mihai
Daniel



TRANSILVANIA UNIVERSITY OF BRAŞOV
FACULTY OF SILVICULTURE AND FOREST ENGINEERING



Research projects & avenues



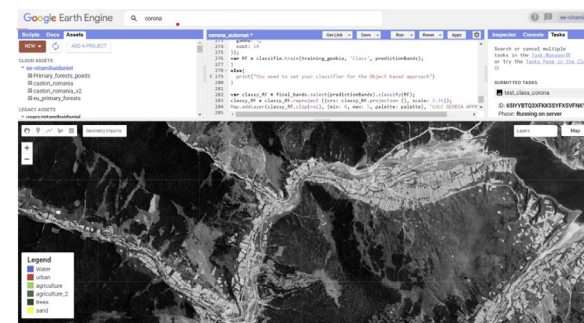
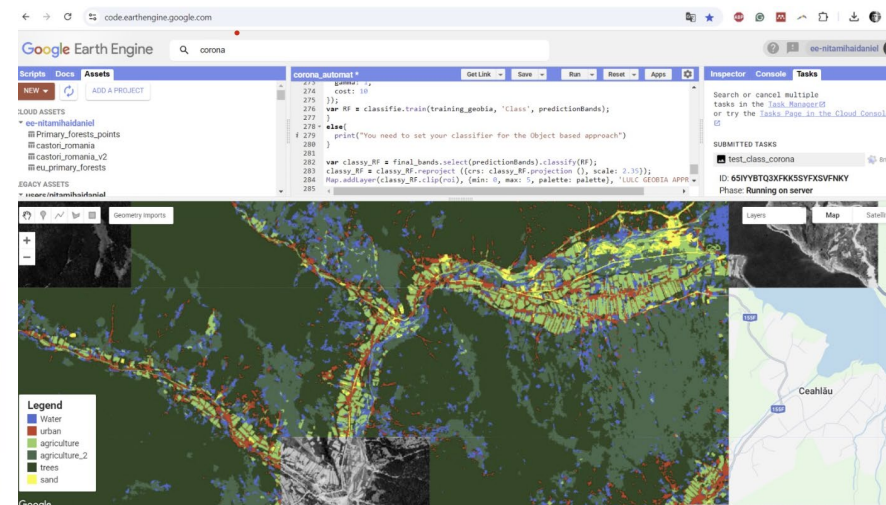
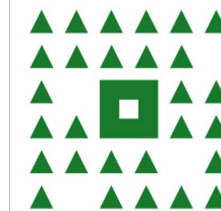
G4B: Grasslands for biodiversity

[Home](#) [Partners](#) [About the project](#) [Contact](#)

G4B: Grasslands for biodiversity: supporting the protection of the biodiversity-rich grasslands and related management practices in the Alps and Carpathians



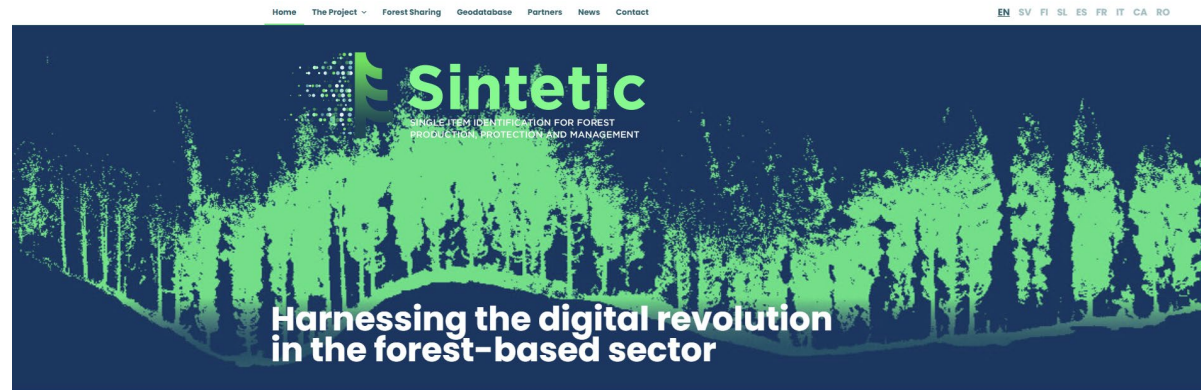
TRANSILVANIA UNIVERSITY OF BRAŞOV
FACULTY OF SILVICULTURE AND FOREST ENGINEERING



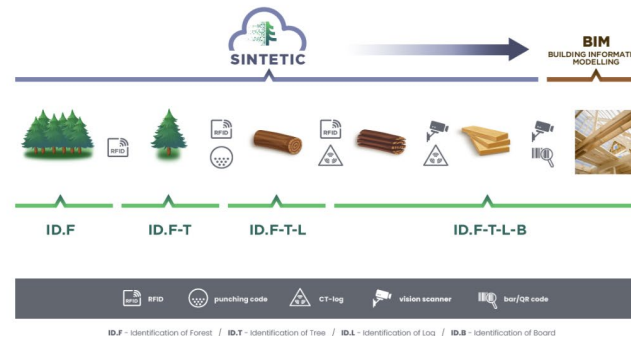
SCAN ME

Prof. Mihai
Daniel

Research projects & avenues



The core objective of Sintetic is to set up and demonstrate a traceability system for trees, logs and boards based on Information and Communications Technology (ICT) innovations.



Funded by
the European Union

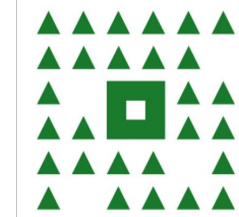
This project has received funding from the European Union's Horizon Europe research and innovation programme under grant agreement No 101082051



Prof. Stelian
Alexandru Borz



TRANSILVANIA UNIVERSITY OF BRAŞOV
FACULTY OF SILVICULTURE AND FOREST ENGINEERING



Research projects & avenues



[Home](#) [About](#) [Objectives](#) [News](#) [Living Labs](#) [Resources](#) [Consortium](#)



Small 4Good

Small4Good: Sustainable multifunctional management by small forest owners in support of bioeconomy, biodiversity and climate. Coordinated by the Norwegian Institute of Bioeconomy Research (NIBIO).

[Learn more](#)



Funded by
the European Union

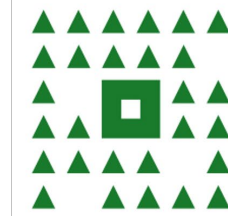
Funded by the European Union. Views and opinions expressed are however those of the author(s) only and do not necessarily reflect those of the European Union or HORIZON-RIA - HORIZON Research and Innovation Actions. Neither the European Union nor the granting authority can be held responsible for them.



Prof. Stelian
Alexandru Borz



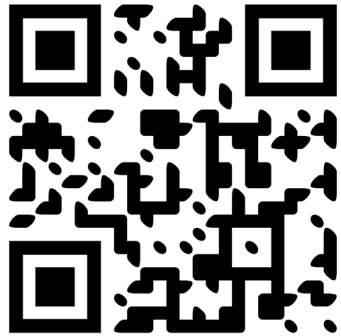
TRANSILVANIA UNIVERSITY OF BRAŞOV
FACULTY OF SILVICULTURE AND FOREST ENGINEERING



Research projects & avenues

ARiF

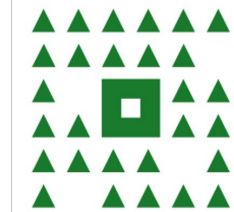
Bringing Digital Data and Reality together –
Augmented Reality in Forestry



Prof. Stelian
Alexandru Borz



TRANSILVANIA UNIVERSITY OF BRAŞOV
FACULTY OF SILVICULTURE AND FOREST ENGINEERING



THANK YOU FOR YOUR
ATTENTION!

...and hope to see you in
Braşov!



TRANSILVANIA UNIVERSITY OF BRAŞOV
FACULTY OF SILVICULTURE AND FOREST ENGINEERING

